

MSR* / MSLT / MEF300 series

PLASTIC SILENCER / EXHAUST CLEANER

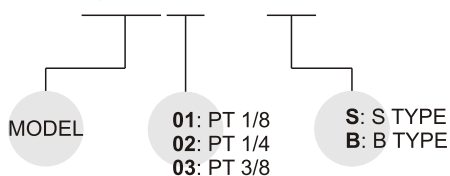


Specification:

Medium	Air
Operating pressure range	0~9 kgf/cm ²
Ambient temperature	0~60°C

Order example:

MSR01 - S



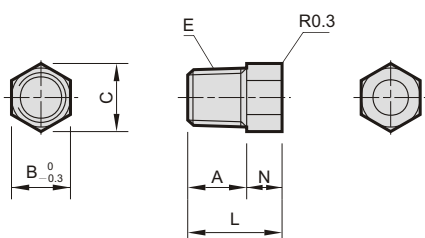
MSR*-*

Modle	Code Port size	A	B	C	D	E	L	N
MSR01-S	PT 1/8	10	10	11.55	-	PT 1/8	16	6
MSR01-B	PT 1/8	7	14	16.3	16.05	PT 1/8	33	7
MSR02-S	PT 1/4	10	14	16.3	16.05	PT 1/4	36	7
MSR02-B	PT 1/4	10	17	19.6	20.05	PT 1/4	63	8
MSR03-B	PT 3/8	12	24	26	26.30	PT 3/8	68	11

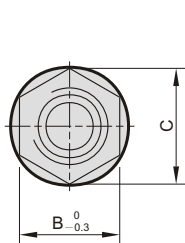
MSLT-*

Modle	Code Port size	A	B	C	D	E	L	N
MSLT-01	PT 1/8	6.2	-	-	16	PT 1/8	33	-
MSLT-02	PT 1/4	8	-	-	19.5	PT 1/4	42.3	-
MSLT-03	PT 3/8	10.5	-	-	24.5	PT 3/8	57	-
MSLT-04	PT 1/2	10.5	-	-	24.5	PT 1/2	57	-
MSLT-06	PT 3/4	19	48.5	54.2	49	PT 3/4	115	8
MSLT-08	PT 1	19	48.5	54.2	49	PT 1	115	8

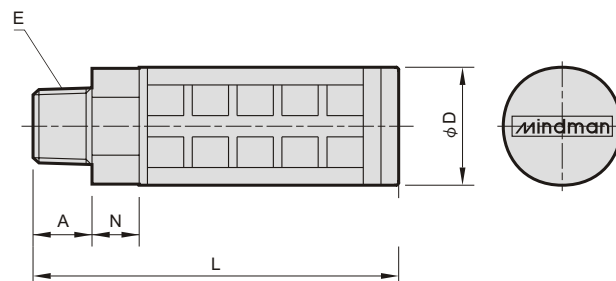
MSR*-S



MSR*-B



MSLT-0*



MEF300

Exhaust
Cleaner



Order example:

MEF300 - 03

